

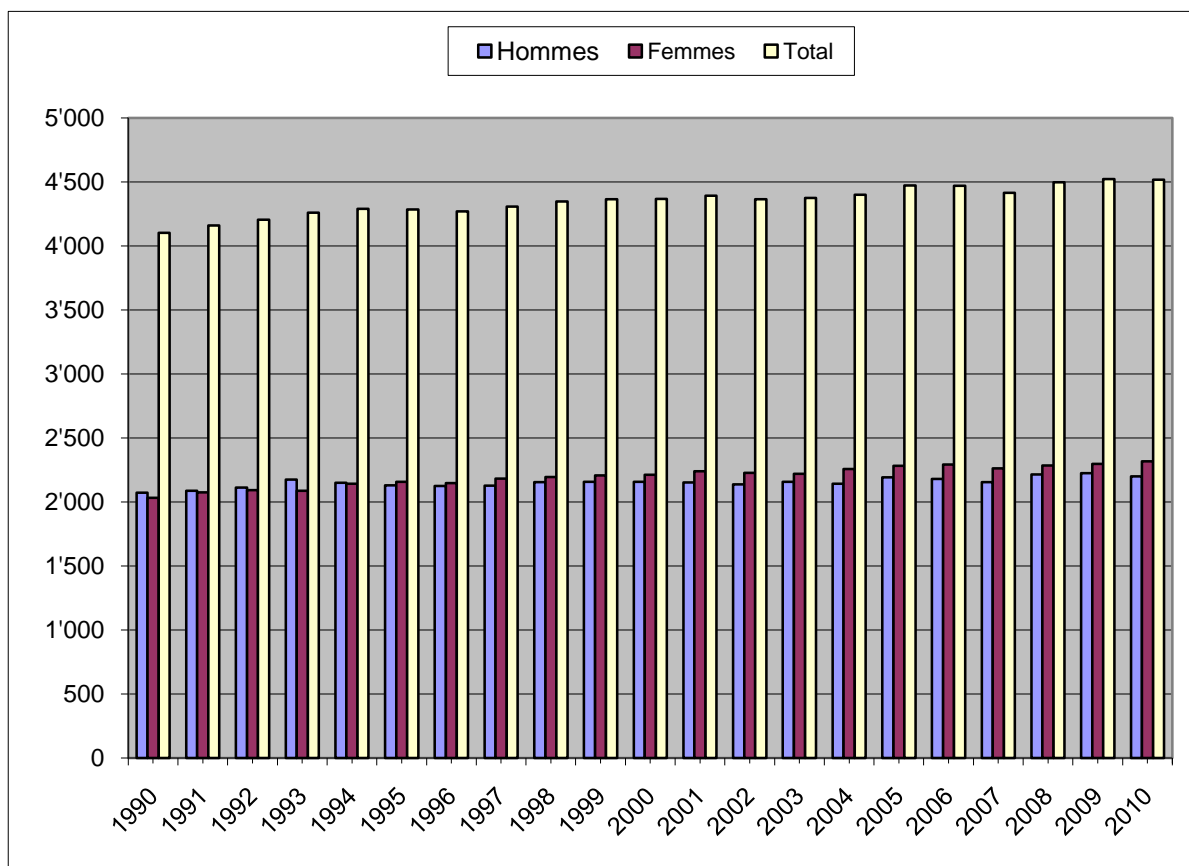
Table des matières

Recensement cantonal de la population de 1990 à 2010

| | |
|------------------------------------|---------|
| <i>Population totale</i> | page 1 |
| <i>Suisses/Suissesses</i> | page 2 |
| <i>Etrangers/Etrangères</i> | page 3 |
| <i>Neuchâtelois(es)</i> | page 4 |
| <i>Confédéré(e)s</i> | page 5 |
| <i>Permis d'établissement / C</i> | page 6 |
| <i>Autorisations de séjour / B</i> | page 7 |
| <i>Admissions provisoires / F</i> | page 8 |
| <i>Requérants d'asile / N</i> | page 9 |
| <i>Séjours de courte durée / L</i> | page 10 |
| <i>Etat civil</i> | page 11 |
| <i>Religion</i> | page 12 |

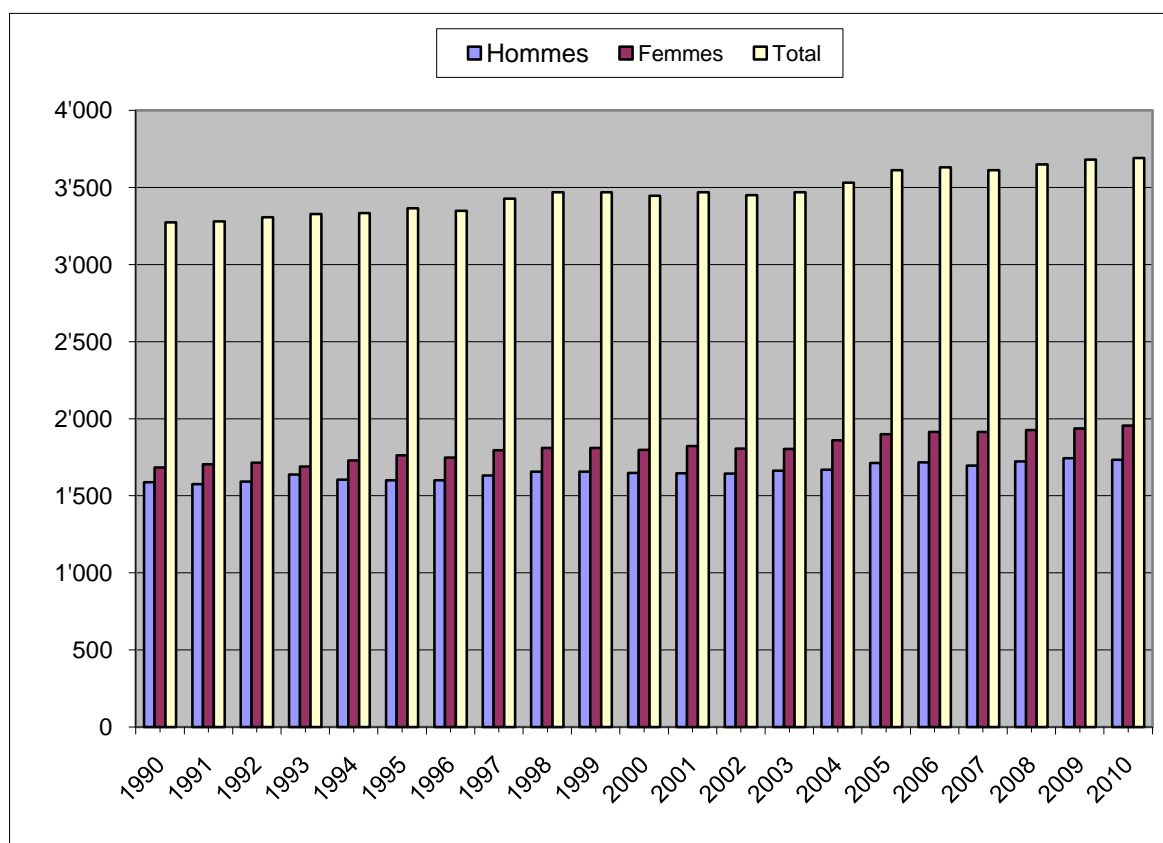
Recensement cantonal de la population de 1990 à 2010
POPULATION TOTALE

| | <u>Hommes</u> | <u>Femmes</u> | <u>Total</u> |
|------|---------------|---------------|---------------|
| 1990 | 2'071 | 2'033 | 4'104 |
| 1991 | 2'086 | 2'074 | 4'160 |
| 1992 | 2'113 | 2'092 | 4'205 |
| 1993 | 2'174 | 2'087 | 4'261 |
| 1994 | 2'150 | 2'141 | 4'291 |
| 1995 | 2'130 | 2'156 | 4'286 |
| 1996 | 2'124 | 2'147 | 4'271 |
| 1997 | 2'127 | 2'182 | 4'309 |
| 1998 | 2'155 | 2'194 | 4'349 |
| 1999 | 2'158 | 2'207 | 4'365 |
| 2000 | 2'157 | 2'212 | 4'369 |
| 2001 | 2'152 | 2'240 | 4'392 |
| 2002 | 2'137 | 2'228 | 4'365 |
| 2003 | 2'156 | 2'220 | 4'376 |
| 2004 | 2'143 | 2'258 | 4'401 |
| 2005 | 2'191 | 2'283 | 4'474 |
| 2006 | 2'180 | 2'291 | 4'471 |
| 2007 | 2'154 | 2'262 | 4'416 |
| 2008 | 2'214 | 2'285 | 4'499 |
| 2009 | 2'225 | 2'297 | 4'522 |
| 2010 | 2'200 | 2'318 | 4'518 |
| | 45'197 | 46'207 | 91'404 |



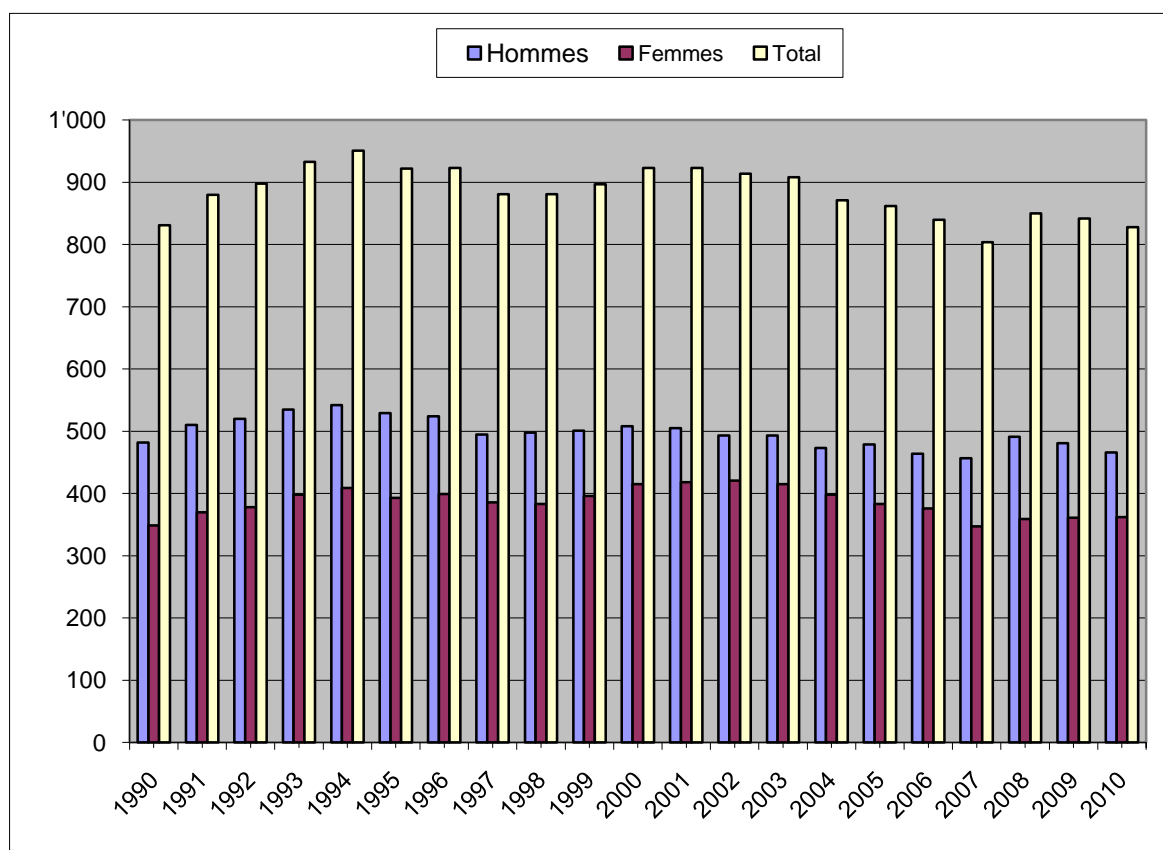
Recensement cantonal de la population de 1990 à 2010
SUISSES

| | <u>Hommes</u> | <u>Femmes</u> | <u>Total</u> |
|------|---------------|---------------|---------------|
| 1990 | 1'589 | 1'684 | 3'273 |
| 1991 | 1'576 | 1'704 | 3'280 |
| 1992 | 1'593 | 1'714 | 3'307 |
| 1993 | 1'639 | 1'689 | 3'328 |
| 1994 | 1'605 | 1'729 | 3'334 |
| 1995 | 1'601 | 1'763 | 3'364 |
| 1996 | 1'600 | 1'748 | 3'348 |
| 1997 | 1'632 | 1'796 | 3'428 |
| 1998 | 1'657 | 1'811 | 3'468 |
| 1999 | 1'657 | 1'811 | 3'468 |
| 2000 | 1'649 | 1'797 | 3'446 |
| 2001 | 1'647 | 1'822 | 3'469 |
| 2002 | 1'644 | 1'807 | 3'451 |
| 2003 | 1'663 | 1'805 | 3'468 |
| 2004 | 1'670 | 1'860 | 3'530 |
| 2005 | 1'712 | 1'900 | 3'612 |
| 2006 | 1'716 | 1'915 | 3'631 |
| 2007 | 1'697 | 1'915 | 3'612 |
| 2008 | 1'723 | 1'926 | 3'649 |
| 2009 | 1'744 | 1'936 | 3'680 |
| 2010 | 1'734 | 1'956 | 3'690 |
| | 34'748 | 38'088 | 72'836 |



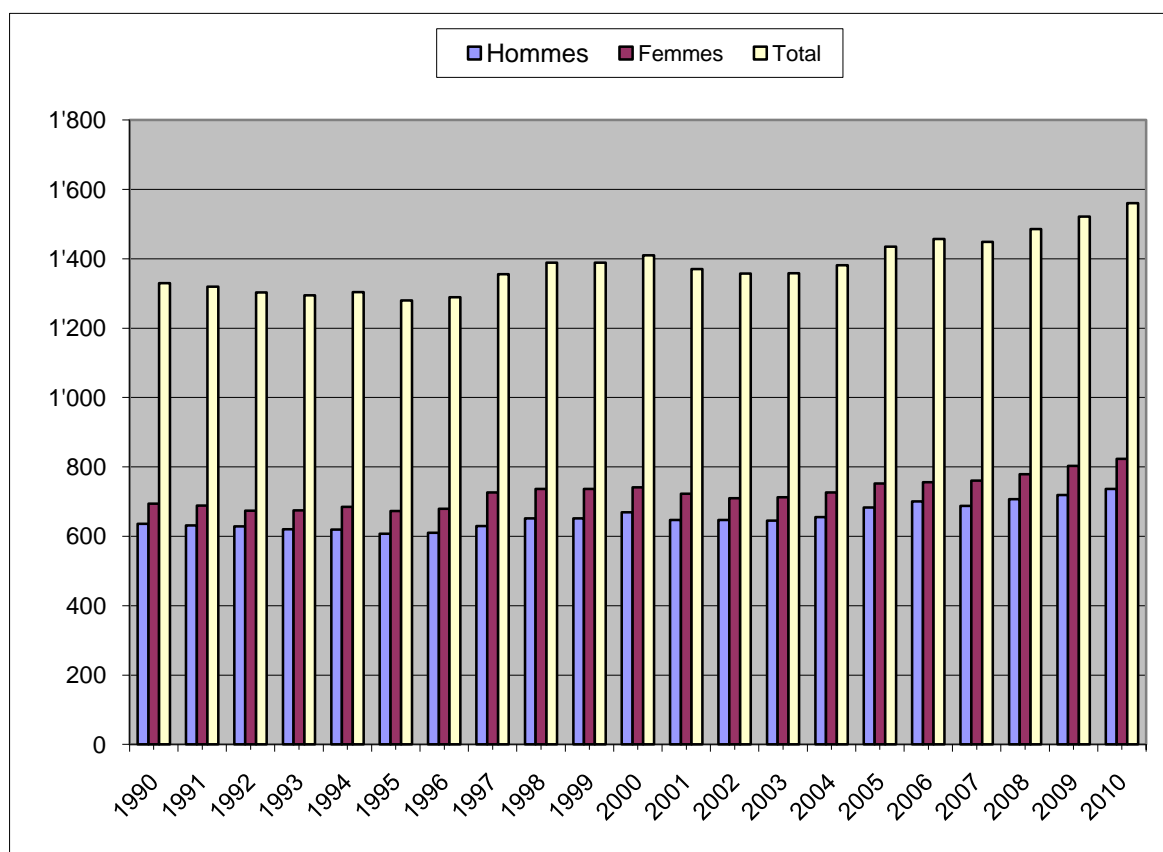
Recensement cantonal de la population de 1990 à 2010
 ETRANGERS

| | <u>Hommes</u> | <u>Femmes</u> | <u>Total</u> |
|------|---------------|---------------|---------------|
| 1990 | 482 | 349 | 831 |
| 1991 | 510 | 370 | 880 |
| 1992 | 520 | 378 | 898 |
| 1993 | 535 | 398 | 933 |
| 1994 | 542 | 409 | 951 |
| 1995 | 529 | 393 | 922 |
| 1996 | 524 | 399 | 923 |
| 1997 | 495 | 386 | 881 |
| 1998 | 498 | 383 | 881 |
| 1999 | 501 | 396 | 897 |
| 2000 | 508 | 415 | 923 |
| 2001 | 505 | 418 | 923 |
| 2002 | 493 | 421 | 914 |
| 2003 | 493 | 415 | 908 |
| 2004 | 473 | 398 | 871 |
| 2005 | 479 | 383 | 862 |
| 2006 | 464 | 376 | 840 |
| 2007 | 457 | 347 | 804 |
| 2008 | 491 | 359 | 850 |
| 2009 | 481 | 361 | 842 |
| 2010 | 466 | 362 | 828 |
| | 10'446 | 8'116 | 18'562 |



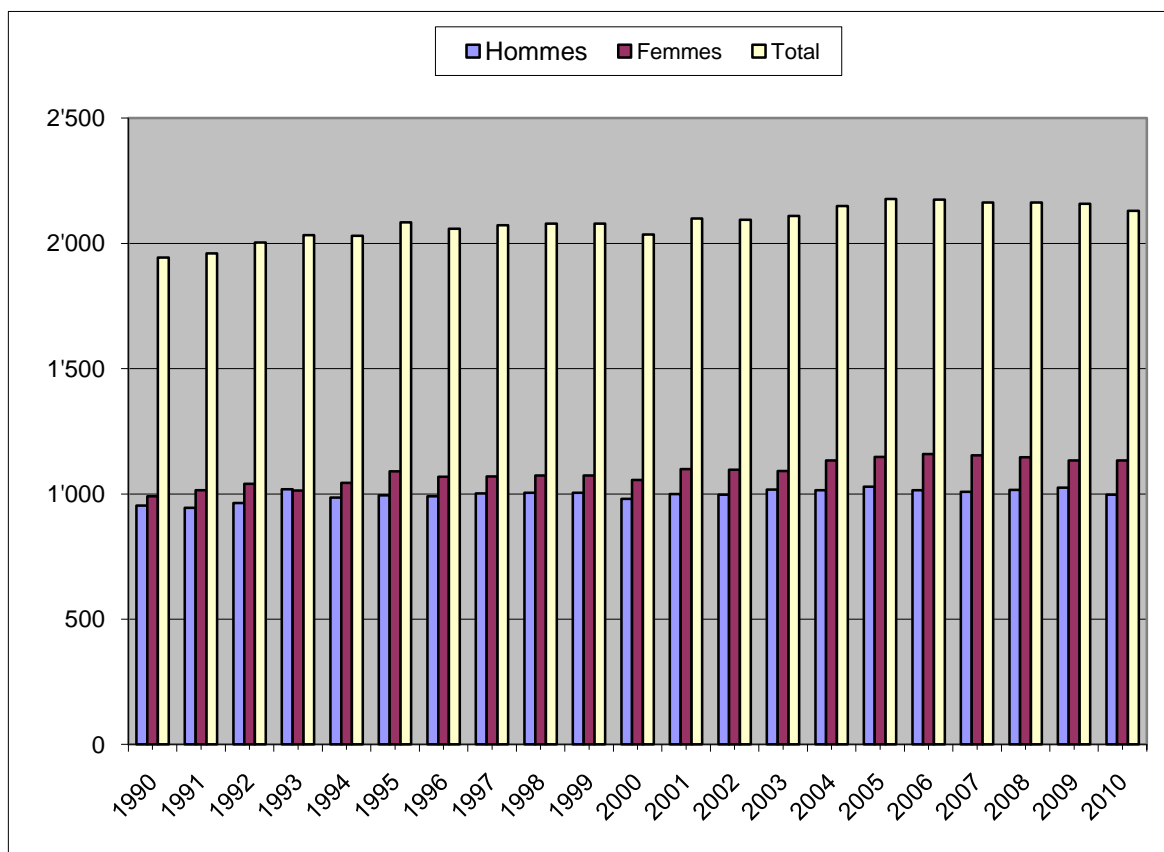
Recensement cantonal de la population de 1990 à 2010
NEUCHATELOIS(ES)

| | <u>Hommes</u> | <u>Femmes</u> | <u>Total</u> |
|------|---------------|---------------|---------------|
| 1990 | 636 | 694 | 1'330 |
| 1991 | 631 | 689 | 1'320 |
| 1992 | 629 | 674 | 1'303 |
| 1993 | 620 | 675 | 1'295 |
| 1994 | 619 | 685 | 1'304 |
| 1995 | 607 | 673 | 1'280 |
| 1996 | 610 | 679 | 1'289 |
| 1997 | 630 | 726 | 1'356 |
| 1998 | 652 | 737 | 1'389 |
| 1999 | 652 | 737 | 1'389 |
| 2000 | 669 | 741 | 1'410 |
| 2001 | 647 | 723 | 1'370 |
| 2002 | 647 | 710 | 1'357 |
| 2003 | 645 | 713 | 1'358 |
| 2004 | 655 | 726 | 1'381 |
| 2005 | 683 | 752 | 1'435 |
| 2006 | 701 | 756 | 1'457 |
| 2007 | 688 | 761 | 1'449 |
| 2008 | 707 | 779 | 1'486 |
| 2009 | 719 | 803 | 1'522 |
| 2010 | 737 | 823 | 1'560 |
| | 13'784 | 15'256 | 29'040 |



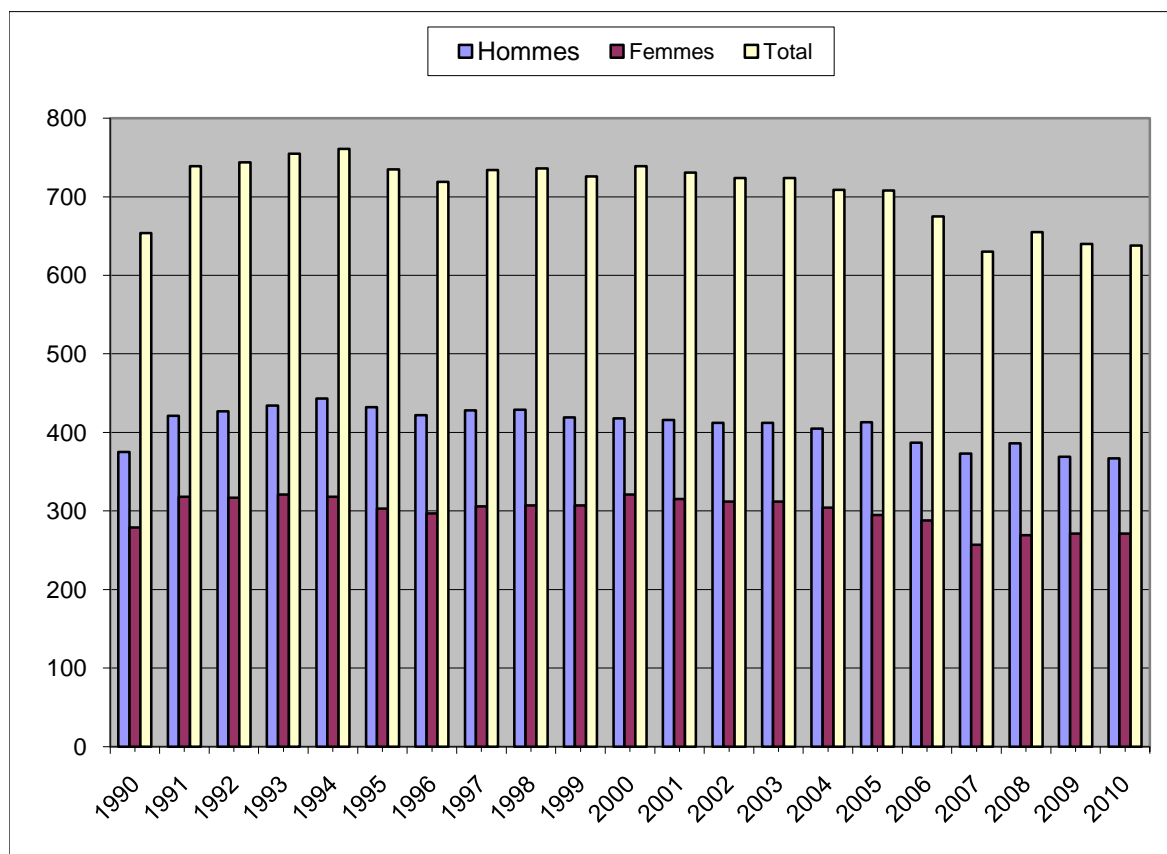
Recensement cantonal de la population de 1990 à 2010
CONFEDERE(E)S

| | <u>Hommes</u> | <u>Femmes</u> | <u>Total</u> |
|------|---------------|---------------|---------------|
| 1990 | 953 | 990 | 1'943 |
| 1991 | 945 | 1'015 | 1'960 |
| 1992 | 964 | 1'040 | 2'004 |
| 1993 | 1'019 | 1'014 | 2'033 |
| 1994 | 986 | 1'044 | 2'030 |
| 1995 | 994 | 1'090 | 2'084 |
| 1996 | 990 | 1'069 | 2'059 |
| 1997 | 1'002 | 1'070 | 2'072 |
| 1998 | 1'005 | 1'074 | 2'079 |
| 1999 | 1'005 | 1'074 | 2'079 |
| 2000 | 980 | 1'056 | 2'036 |
| 2001 | 1'000 | 1'099 | 2'099 |
| 2002 | 997 | 1'097 | 2'094 |
| 2003 | 1'018 | 1'092 | 2'110 |
| 2004 | 1'015 | 1'134 | 2'149 |
| 2005 | 1'029 | 1'148 | 2'177 |
| 2006 | 1'015 | 1'159 | 2'174 |
| 2007 | 1'009 | 1'154 | 2'163 |
| 2008 | 1'016 | 1'147 | 2'163 |
| 2009 | 1'025 | 1'133 | 2'158 |
| 2010 | 997 | 1'133 | 2'130 |
| | 20'964 | 22'832 | 43'796 |



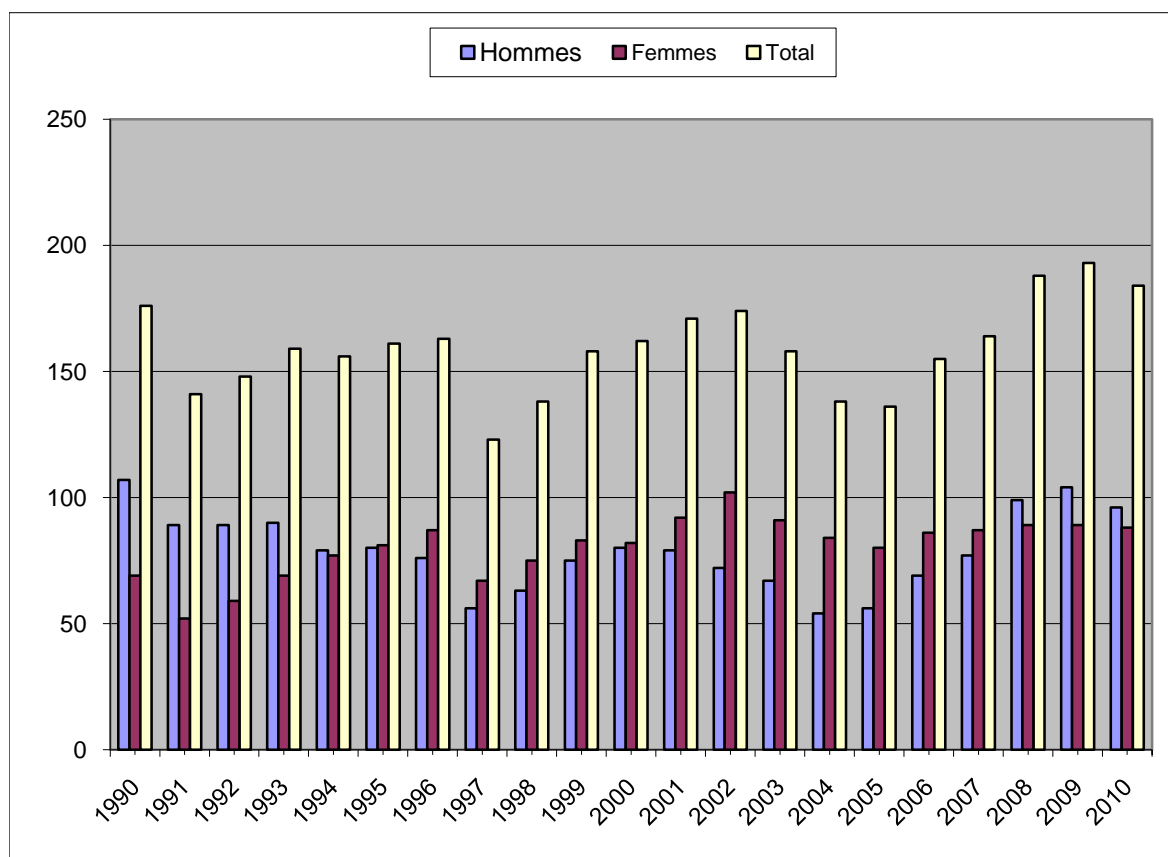
Recensement cantonal de la population de 1990 à 2010
PERMIS D'ETABLISSEMENT / C

| | <u>Hommes</u> | <u>Femmes</u> | <u>Total</u> |
|------|--------------------|--------------------|---------------------|
| 1990 | 375 | 279 | 654 |
| 1991 | 421 | 318 | 739 |
| 1992 | 427 | 317 | 744 |
| 1993 | 434 | 321 | 755 |
| 1994 | 443 | 318 | 761 |
| 1995 | 432 | 303 | 735 |
| 1996 | 422 | 297 | 719 |
| 1997 | 428 | 306 | 734 |
| 1998 | 429 | 307 | 736 |
| 1999 | 419 | 307 | 726 |
| 2000 | 418 | 321 | 739 |
| 2001 | 416 | 315 | 731 |
| 2002 | 412 | 312 | 724 |
| 2003 | 412 | 312 | 724 |
| 2004 | 405 | 304 | 709 |
| 2005 | 413 | 295 | 708 |
| 2006 | 387 | 288 | 675 |
| 2007 | 373 | 257 | 630 |
| 2008 | 386 | 269 | 655 |
| 2009 | 369 | 271 | 640 |
| 2010 | 367 | 271 | 638 |
| | <hr/> 8'588 | <hr/> 6'288 | <hr/> 14'876 |



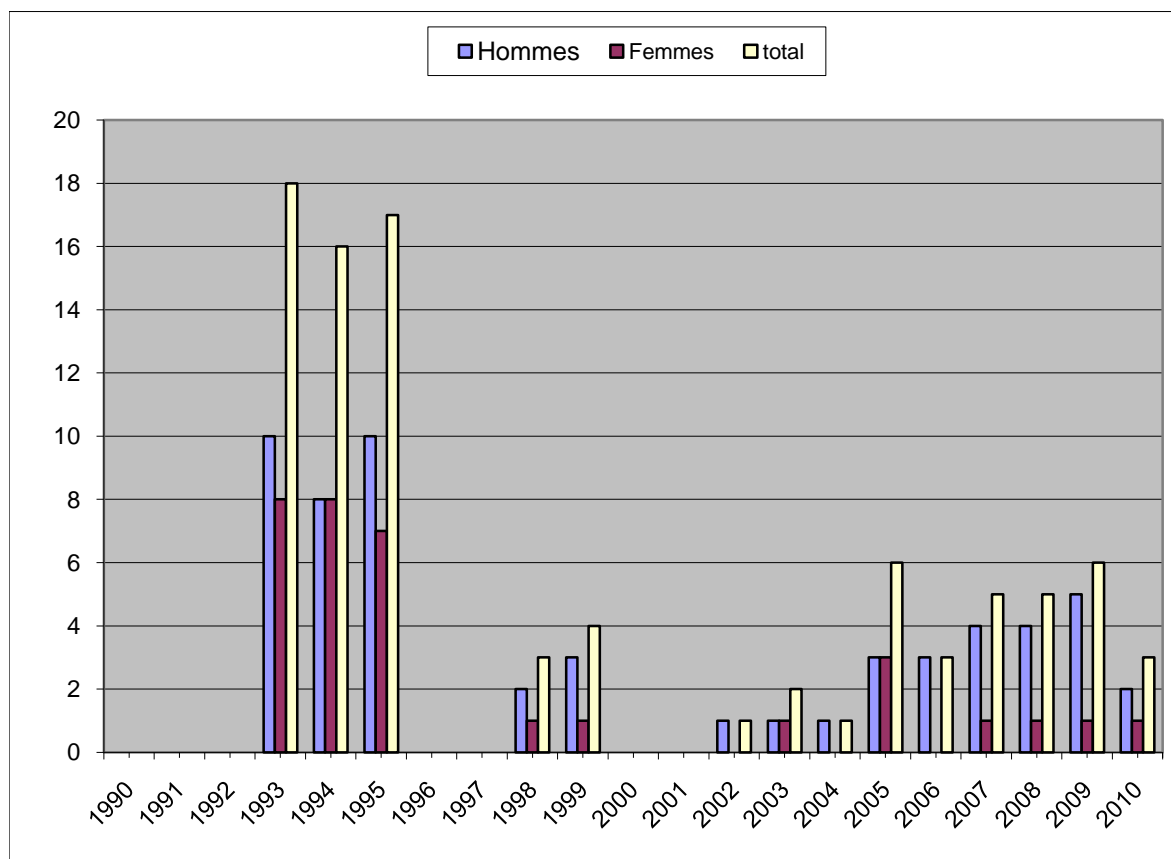
Recensement cantonal de la population de 1990 à 2010
 AUTORISATION DE SEJOUR / B

| | <u>Hommes</u> | <u>Femmes</u> | <u>Total</u> |
|------|---------------|---------------|--------------|
| 1990 | 107 | 69 | 176 |
| 1991 | 89 | 52 | 141 |
| 1992 | 89 | 59 | 148 |
| 1993 | 90 | 69 | 159 |
| 1994 | 79 | 77 | 156 |
| 1995 | 80 | 81 | 161 |
| 1996 | 76 | 87 | 163 |
| 1997 | 56 | 67 | 123 |
| 1998 | 63 | 75 | 138 |
| 1999 | 75 | 83 | 158 |
| 2000 | 80 | 82 | 162 |
| 2001 | 79 | 92 | 171 |
| 2002 | 72 | 102 | 174 |
| 2003 | 67 | 91 | 158 |
| 2004 | 54 | 84 | 138 |
| 2005 | 56 | 80 | 136 |
| 2006 | 69 | 86 | 155 |
| 2007 | 77 | 87 | 164 |
| 2008 | 99 | 89 | 188 |
| 2009 | 104 | 89 | 193 |
| 2010 | 96 | 88 | 184 |
| | <hr/> | <hr/> | <hr/> |
| | 1'657 | 1'689 | 3'346 |



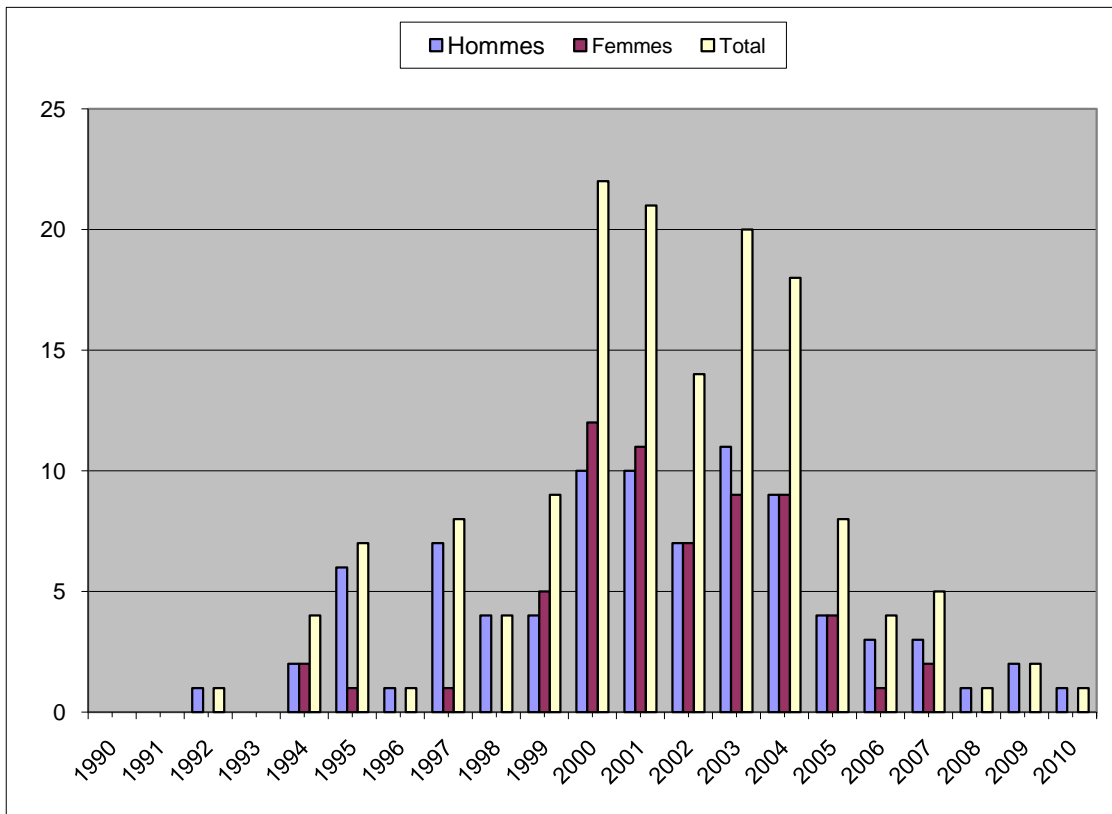
Recensement cantonal de la population de 1990 à 2010
ADMISSIONS PROVISOIRES / F

| | <u>Hommes</u> | <u>Femmes</u> | <u>Total</u> |
|------|-----------------|-----------------|-----------------|
| 1990 | 0 | 0 | 0 |
| 1991 | 0 | 0 | 0 |
| 1992 | 0 | 0 | 0 |
| 1993 | 10 | 8 | 18 |
| 1994 | 8 | 8 | 16 |
| 1995 | 10 | 7 | 17 |
| 1996 | 0 | 0 | 0 |
| 1997 | 0 | 0 | 0 |
| 1998 | 2 | 1 | 3 |
| 1999 | 3 | 1 | 4 |
| 2000 | 0 | 0 | 0 |
| 2001 | 0 | 0 | 0 |
| 2002 | 1 | 0 | 1 |
| 2003 | 1 | 1 | 2 |
| 2004 | 1 | 0 | 1 |
| 2005 | 3 | 3 | 6 |
| 2006 | 3 | 0 | 3 |
| 2007 | 4 | 1 | 5 |
| 2008 | 4 | 1 | 5 |
| 2009 | 5 | 1 | 6 |
| 2010 | 2 | 1 | 3 |
| | <hr/> 57 | <hr/> 33 | <hr/> 90 |



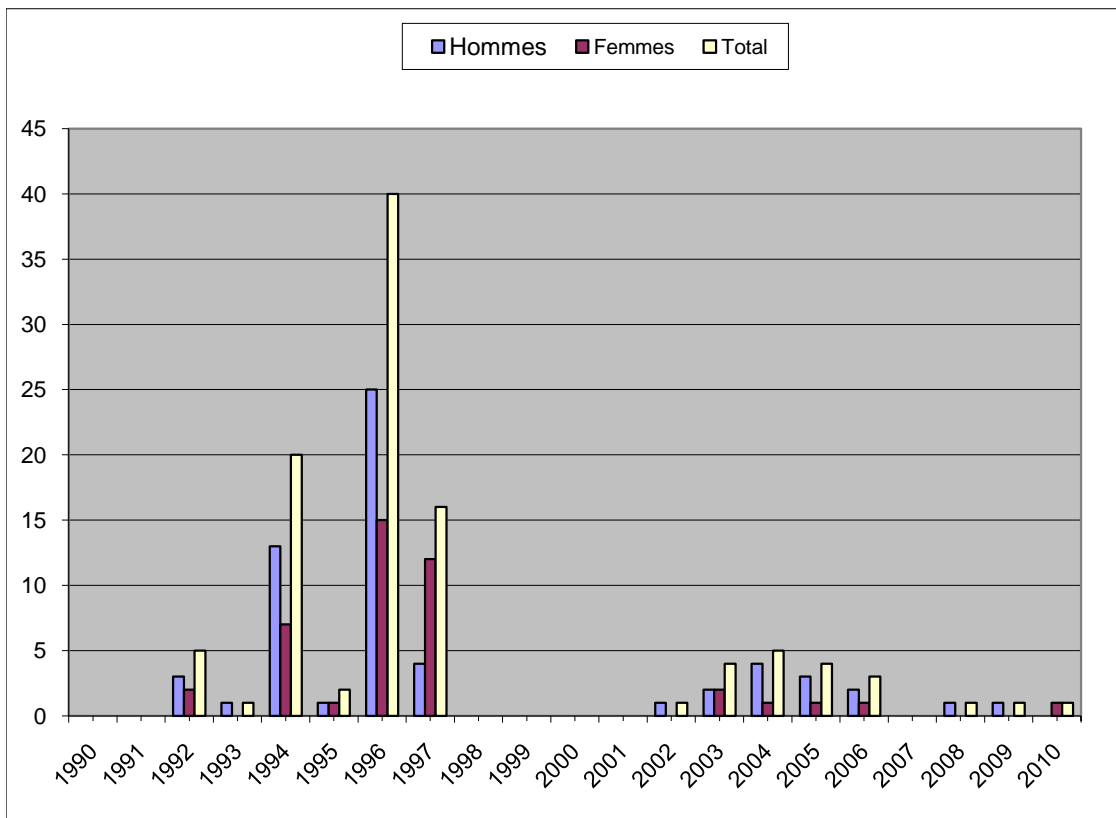
Recensement cantonal de la population de 1990 à 2010
REQUERANTS D'ASILE / N

| | <u>Hommes</u> | <u>Femmes</u> | <u>Total</u> |
|------|---------------|---------------|--------------|
| 1990 | 0 | 0 | 0 |
| 1991 | 0 | 0 | 0 |
| 1992 | 1 | 0 | 1 |
| 1993 | 0 | 0 | 0 |
| 1994 | 2 | 2 | 4 |
| 1995 | 6 | 1 | 7 |
| 1996 | 1 | 0 | 1 |
| 1997 | 7 | 1 | 8 |
| 1998 | 4 | 0 | 4 |
| 1999 | 4 | 5 | 9 |
| 2000 | 10 | 12 | 22 |
| 2001 | 10 | 11 | 21 |
| 2002 | 7 | 7 | 14 |
| 2003 | 11 | 9 | 20 |
| 2004 | 9 | 9 | 18 |
| 2005 | 4 | 4 | 8 |
| 2006 | 3 | 1 | 4 |
| 2007 | 3 | 2 | 5 |
| 2008 | 1 | 0 | 1 |
| 2009 | 2 | 0 | 2 |
| 2010 | 1 | 0 | 1 |
| | <hr/> 86 | <hr/> 64 | <hr/> 150 |



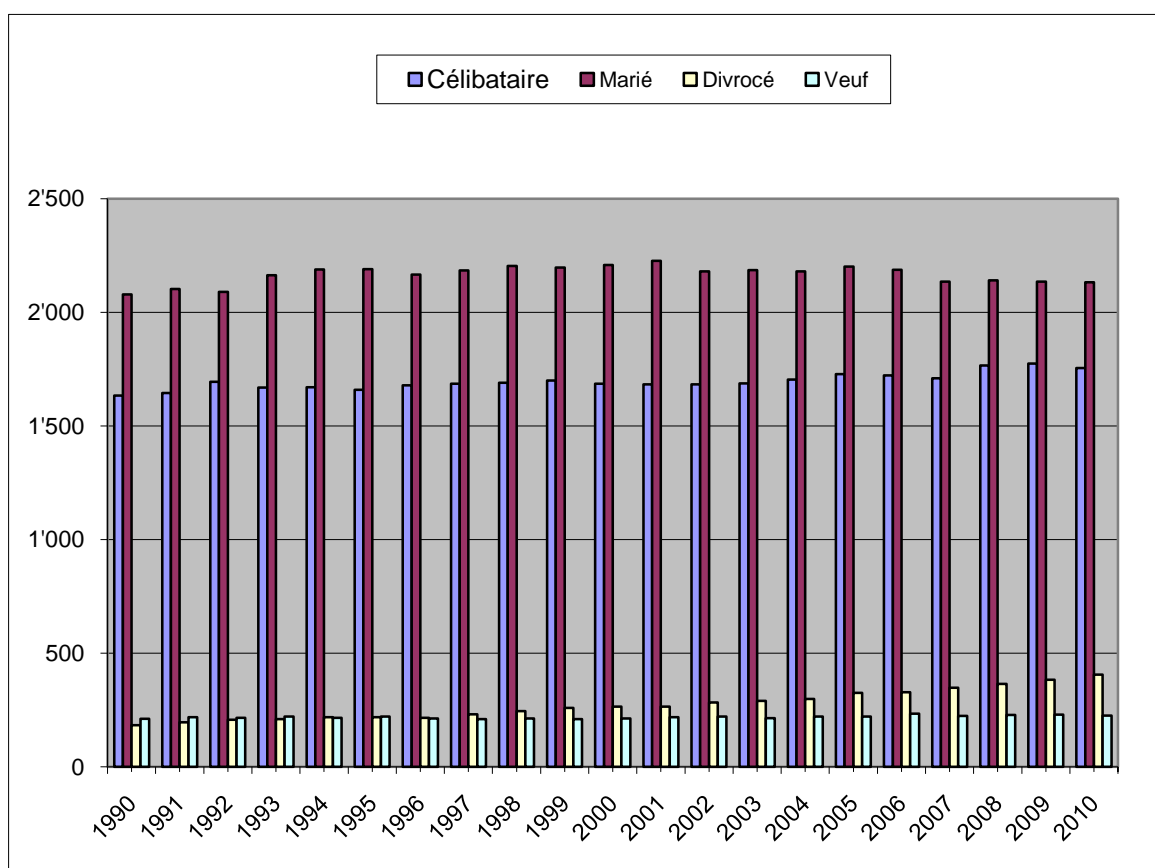
Recensement cantonal de la population de 1990 à 2010
SEJOURS DE COURTE DUREE / L

| | <u>Hommes</u> | <u>Femmes</u> | <u>Total</u> |
|------|---------------|---------------|--------------|
| 1990 | 0 | 0 | 0 |
| 1991 | 0 | 0 | 0 |
| 1992 | 3 | 2 | 5 |
| 1993 | 1 | 0 | 1 |
| 1994 | 13 | 7 | 20 |
| 1995 | 1 | 1 | 2 |
| 1996 | 25 | 15 | 40 |
| 1997 | 4 | 12 | 16 |
| 1998 | 0 | 0 | 0 |
| 1999 | 0 | 0 | 0 |
| 2000 | 0 | 0 | 0 |
| 2001 | 0 | 0 | 0 |
| 2002 | 1 | 0 | 1 |
| 2003 | 2 | 2 | 4 |
| 2004 | 4 | 1 | 5 |
| 2005 | 3 | 1 | 4 |
| 2006 | 2 | 1 | 3 |
| 2007 | 0 | 0 | 0 |
| 2008 | 1 | 0 | 1 |
| 2009 | 1 | 0 | 1 |
| 2010 | 0 | 1 | 1 |
| | <hr/> 61 | <hr/> 43 | <hr/> 104 |



Recensement cantonal de la population de 1990 à 2010
ETAT CIVIL

| | <u>Célibataire</u> | <u>Marié</u> | <u>Divorcé</u> | <u>Veuf</u> |
|------|--------------------|---------------|----------------|--------------|
| 1990 | 1'633 | 2'078 | 182 | 211 |
| 1991 | 1'644 | 2'102 | 196 | 218 |
| 1992 | 1'694 | 2'090 | 206 | 215 |
| 1993 | 1'669 | 2'163 | 209 | 220 |
| 1994 | 1'670 | 2'188 | 218 | 215 |
| 1995 | 1'658 | 2'189 | 218 | 221 |
| 1996 | 1'679 | 2'165 | 215 | 212 |
| 1997 | 1'685 | 2'184 | 231 | 209 |
| 1998 | 1'690 | 2'203 | 244 | 212 |
| 1999 | 1'699 | 2'197 | 259 | 210 |
| 2000 | 1'685 | 2'208 | 264 | 212 |
| 2001 | 1'683 | 2'226 | 265 | 218 |
| 2002 | 1'683 | 2'180 | 282 | 220 |
| 2003 | 1'687 | 2'185 | 290 | 214 |
| 2004 | 1'703 | 2'180 | 298 | 220 |
| 2005 | 1'727 | 2'201 | 325 | 221 |
| 2006 | 1'722 | 2'187 | 328 | 234 |
| 2007 | 1'709 | 2'135 | 348 | 224 |
| 2008 | 1'766 | 2'140 | 364 | 227 |
| 2009 | 1'774 | 2'134 | 383 | 229 |
| 2010 | 1'754 | 2'132 | 405 | 225 |
| | 35'614 | 45'467 | 5'730 | 4'587 |



Recensement cantonal de la population de 1990 à 2010
RELIGION

| | <u>Protestante</u> | <u>Catholique romaine</u> | <u>Catholique chrétienne</u> | <u>Divers - Sans religion</u> |
|------|--------------------|-------------------------------|----------------------------------|-----------------------------------|
| 1990 | 2'263 | 1'601 | 1 | 439 |
| 1991 | 2'032 | 1'626 | 1 | 501 |
| 1992 | 1'980 | 1'603 | 6 | 615 |
| 1993 | 2'017 | 1'575 | 14 | 655 |
| 1994 | 1'970 | 1'609 | 13 | 699 |
| 1995 | 1'897 | 1'590 | 14 | 785 |
| 1996 | 1'854 | 1'567 | 11 | 839 |
| 1997 | 1'847 | 1'600 | 10 | 852 |
| 1998 | 1'837 | 1'624 | 0 | 888 |
| 1999 | 1'796 | 1'602 | 12 | 955 |
| 2000 | 1'796 | 1'602 | 12 | 959 |
| 2001 | 1'729 | 1'636 | 8 | 1'017 |
| 2002 | 1'716 | 1'620 | 7 | 1'020 |
| 2003 | 1'702 | 1'610 | 6 | 1'058 |
| 2004 | 1'675 | 1'644 | 6 | 1'075 |
| 2005 | 1'709 | 1'665 | 14 | 1'085 |
| 2006 | 1'675 | 1'659 | 20 | 1'116 |
| 2007 | 1'622 | 1'620 | 30 | 1'144 |
| 2008 | 1'593 | 1'627 | 32 | 1'247 |
| 2009 | 1'569 | 1'631 | 38 | 1'284 |
| 2010 | 1'543 | 1'602 | 33 | 1'340 |
| | 37'822 | 33'913 | 288 | 19'573 |

